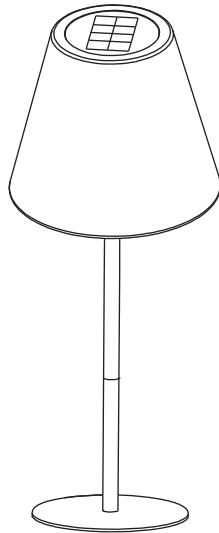




PRODUCT NAME: Solar LED Outdoor Table Lamp

ITEM NUMBER: LO479

ASSEMBLED DIMENSIONS: 25"H x 9" Diameter



## IMPORTANT SAFETY INSTRUCTIONS:

- For your safety, read entire Instruction Sheet before using lamp.
- Keep product out of reach of children. This lamp is not a toy.
- Do not leave lamp outside in heavy rain. Protect from excessive moisture entering lamp body.
- Protect lamp from chemicals, liquids and excessive heat.
- Do not drop, stand on, jump nor place heavy objects on lamp.
- Do not use lamp if cracked or broken, remove screws nor open. Repairs by qualified person(s).
- Disconnect from charger when not in use.
- CHARGING: Place on level surface in DIRECT SUNLIGHT or use Micro USB Cord (included).
- Dust or grime may block SOLAR PANELS and PREVENT CHARGING. Periodically use a water dampened cloth to wipe panels clean.

## WARNING:

- Built-in rechargeable battery IS NOT replaceable.
- Do not remove or replace built-in battery.
- Do not dispose lamp into trash. Refer to local regulations for proper disposal.
- Battery should be fully discharged before disposal.

PRODUCTS ARE NOT INTENDED  
FOR COMMERCIAL USE.

Updated: 5-1-2023

MADE IN CHINA

Page 1 of 4



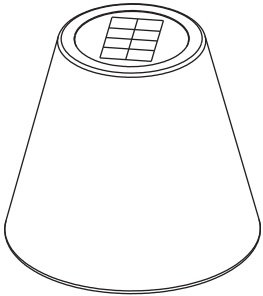
Retain these instructions for future reference.

## COMPONENTS

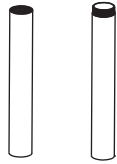
INCLUDED:

**NOTE:** Remove all parts from box along with any plastic protective packaging and carefully lay all parts.

**DO NOT** discard any packaging until assembly and installation are complete.



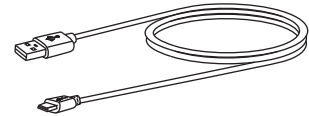
1- Shade (A)



2- Poles (B)



1- Base (C)



1-Micro USB cord (D)

Approved Location for Use: Indoor/Outdoor Environment

Charging Time: Approximately 4 hours via USB; 11 hours via solar (depends on sunlight intensity)

Running Time: Approximately 12 hours (low brightness level); 6 hours (medium); 3.5 hours (high)

**CLEANING and CARE:** Periodically wipe down with a soft, clean cloth. Turn off when not in use.

## ENVIRONMENTAL PROTECTION:



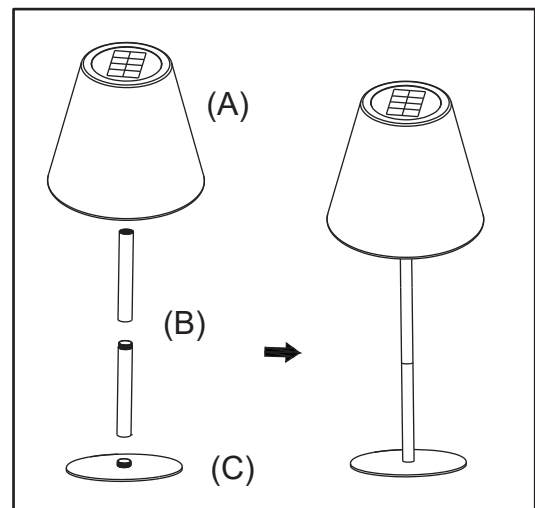
This symbol on the product dictates that Waste electrical products should not be disposed of with household waste. Please recycle where facilities exist. Check with your Local Authority or retailer for recycling advice.

## ASSEMBLY AND USE

### STEP 1: ASSEMBLE LAMP

Thread and turn Poles (B) together then turn and tighten onto Base (C). Do not over-tighten.

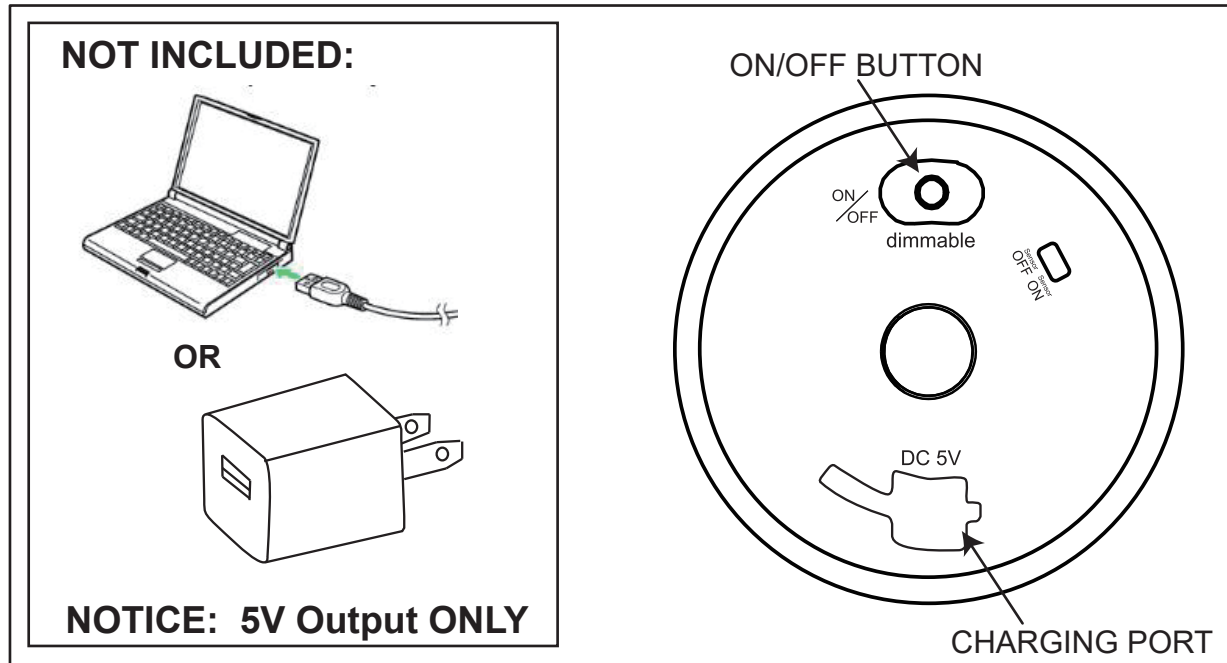
Place Lamp Shade (A) onto top of (B) then gently turn and tighten together.



Customer Service: 800-367-2810  
Online: [www.ballarddesigns.com](http://www.ballarddesigns.com)

## STEP 2: CHARGE BATTERY

Connect USB Cable (D) to a computer or **5V OUTPUT** charging adapter. Insert other end of Cable into Micro Port on Lamp part (A). Place Switch in OFF position. Prior to use, charge for 4-5 hours (or until fully charged).  
**NOTE:** Indicator light is RED during CHARGING and GREEN when fully charged and process is complete.



## STEP 3: POWERING LAMP

**ON/OFF Dimmer Switch:** Turn on/off by **HOLDING DOWN** switch on bottom of Shade (A) for approximately 3-5 seconds.

**DIMMER:** To adjust between 3 levels of light intensity, quickly press switch to cycle between levels.

**SENSOR:** On position activates twilight function, turning light on in low light environments. Light will automatically turn off when environmental light is restored.

## SOLAR PANELS

- To achieve optimum lighting performance, place lamp in a location where it can absorb maximum sunlight during the day. Direct sunlight. No shaded areas.

-Ensure there are no other light sources (street lamps, porch lights, etc.) near charging location as they could interfere with process. Lower solar light levels (winter months) may affect charging time.

-Keep Panels clear of dust, grime and debris by periodically wiping down with a damp cloth.



## OUTDOOR USE

---

- Although Lamp is weatherproof and safe for outdoor use, NONE of the charging components are. **ALL CHARGING ACTIVITY MUST BE PERFORMED IN A DRY INDOOR ENVIRONMENT.**

-Protect Lamp from excessive moisture. Do not leave outside in rainy, stormy weather.

## STORAGE

---

- Recommended that lamp is stored during winter months or when not in use for long periods.

-Completely dry all components then store in a cool, dry area. NOTE: When lamp is returned to service, follow first time set up procedure outlined in STEP 1.

### FCC INSTRUCTION:

Caution: Changes or modifications not expressly approved by the party responsible for compliance could void the user's authority to operate the equipment.

Note: This equipment has been tested and found to comply with the limits for a Class B digital device, pursuant to part 15 of the FCC Rules. These limits are designed to provide reasonable protection against harmful interference in a residential installation. This equipment generates, uses and can radiate radio frequency energy and, if not installed and used in accordance with the instructions, may cause harmful interference to radio communications. However, there is no guarantee that interference will not occur in a particular installation. If this equipment does cause harmful interference to radio or television reception, which can be determined by turning the equipment off and on, the user is encouraged to try to correct the interference by one or more of the following measures:

- Reorient or relocate the receiving antenna.
- Increase the separation between the equipment and receiver.
- Connect the equipment into an outlet on a circuit different from that to which the receiver is connected.
- Consult the dealer or an experienced radio/TV technician for help.

### Battery Operating Environment:

Charging: 32°F to 113°F (Temps below 32° reduce capacity and battery life.)

Discharge: 6.8 °F to 122°F

Long Term Storage: -4°F to 77°F (Charge every 3 months during storage period)

