



PRODUCT NAME: Sarah Storage Tower - Shoes, Jewelry, & Shelves

ITEM NUMBER: ML019

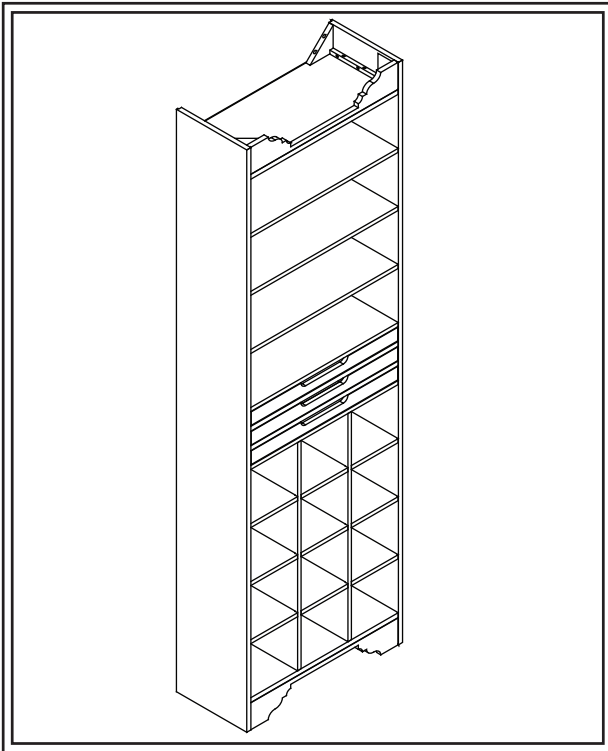
ASSEMBLED DIMENSIONS: 86"H X 26 1/2"W X 14"D

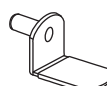
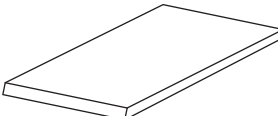
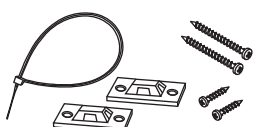


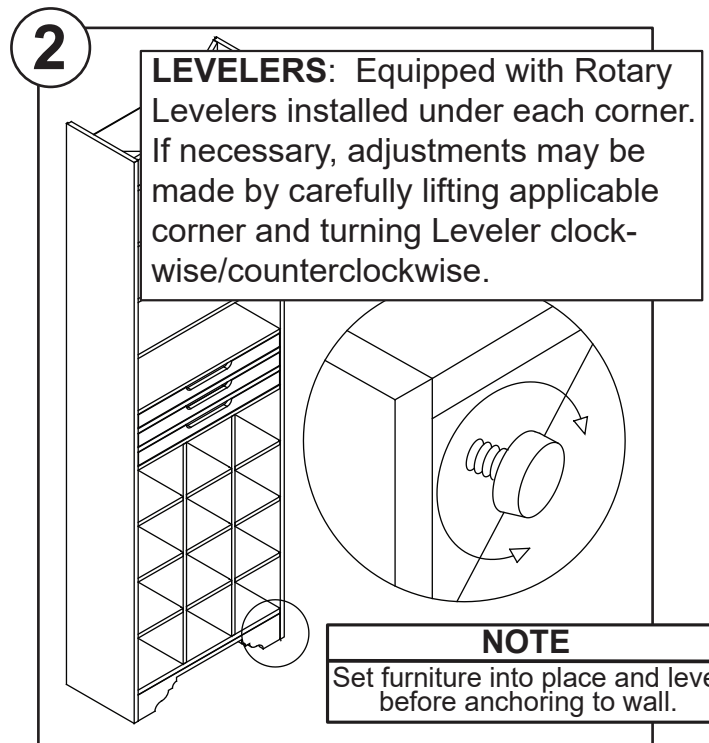
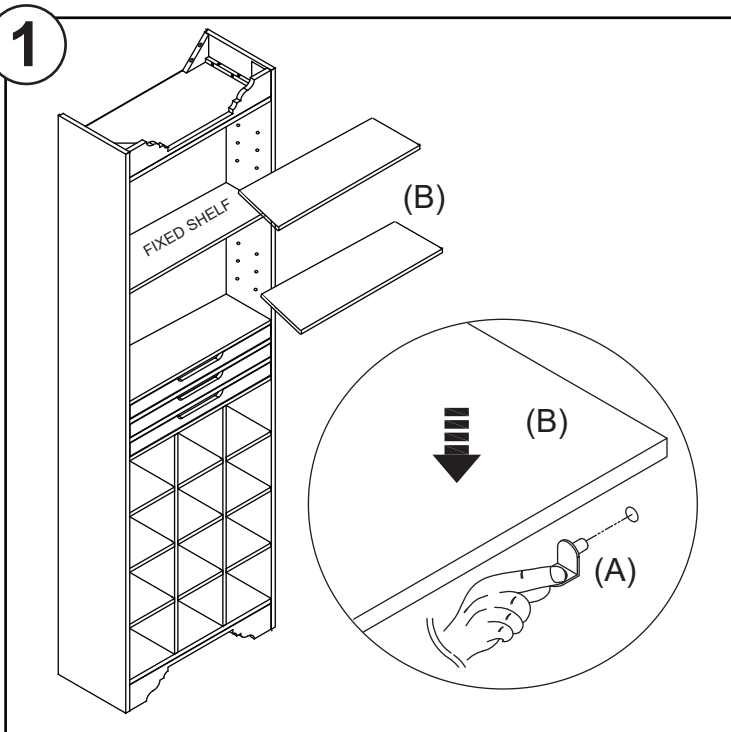
REQUIRED TOOLS:

Phillips Screwdriver

ASSEMBLY TIME: 5 - 10 minutes



| Ltr. | Qty. | Hardware/Components Included | |
|------|------|--|---|
| A | 8 |  | Shelf Supports |
| B | 2 |  | Shelves |
| C | 2 |  | Wall Anchoring (Anti-tip) Kit See page 2 |



NOTE

Set furniture into place and level before anchoring to wall.



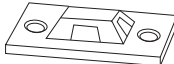

PRODUCTS ARE NOT INTENDED
FOR COMMERCIAL USE.

UPDATED: 10-26-2023

MADE IN INDONESIA

Page 1 of 2

WALL ANCHORING HARDWARE (ANTI-TIP)

| Ltr. | Qty. | Hardware Included | |
|------|------|---|----------------|
| A | 4 |  | Small Screw |
| B | 4 |  | Large Screw |
| C | 4 |  | Bracket |
| D | 2 |  | Retention Belt |



WARNING

Tip-Over Hazard

Serious or fatal crushing injuries can occur from a furniture tip-over
Prevent tipping accidents. Anchor your furniture.

1. Place furniture against wall at desired location then locate and mark a Wall Stud behind unit.
2. Corresponding to Stud location, attach one Bracket (C) to back of unit using Small Screws (A).
3. To keep hardware out of view after installation, attach remaining Bracket (C) **INTO WALL STUD** with Large Screws (B) 2 inches below Bracket attached to back of unit.
4. Move unit into place, align Brackets then connect both using Retention Belt (D).
5. Confirm Belt is securely laced and locked.

