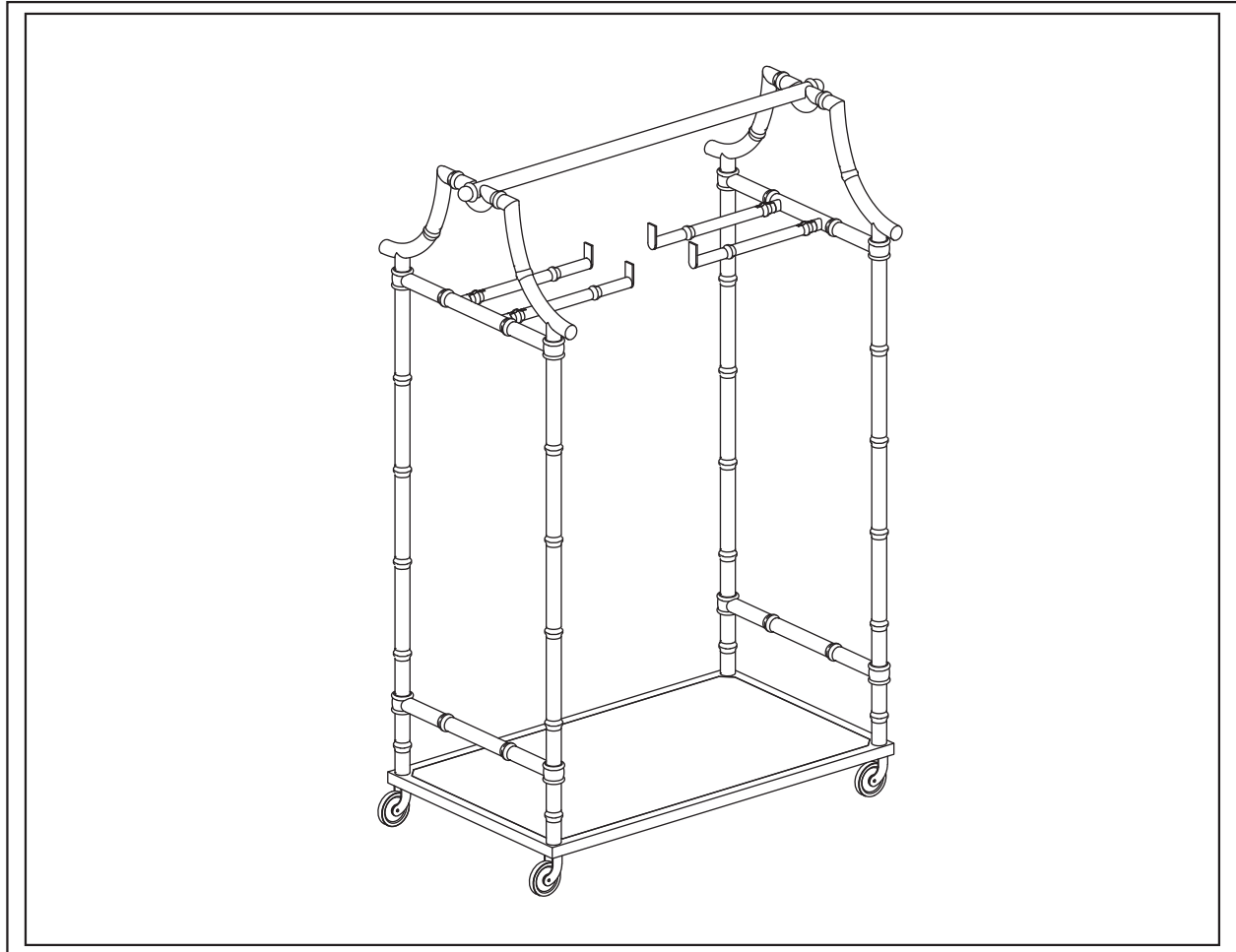




PRODUCT NAME: Aurora Chair and Coat Rack

ITEM NUMBER: SG042

ASSEMBLED DIMENSIONS : 48 3/4"H x 32"W x 20"D



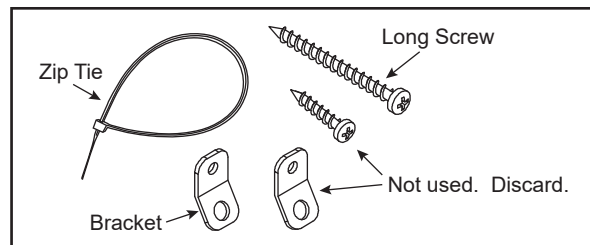
NOTICE - TIP OVER HAZARD

2 Wall Anchoring Kits are included which may be used if necessary.

Attach one Bracket to a WALL STUD using Long Screw.

Thread Zip Tie through Bracket and around an upright on Rack.

Pull to tighten and secure Rack to WALL STUD.



PRODUCTS ARE NOT INTENDED
FOR COMMERCIAL USE.

UPDATED: 8-25-2021

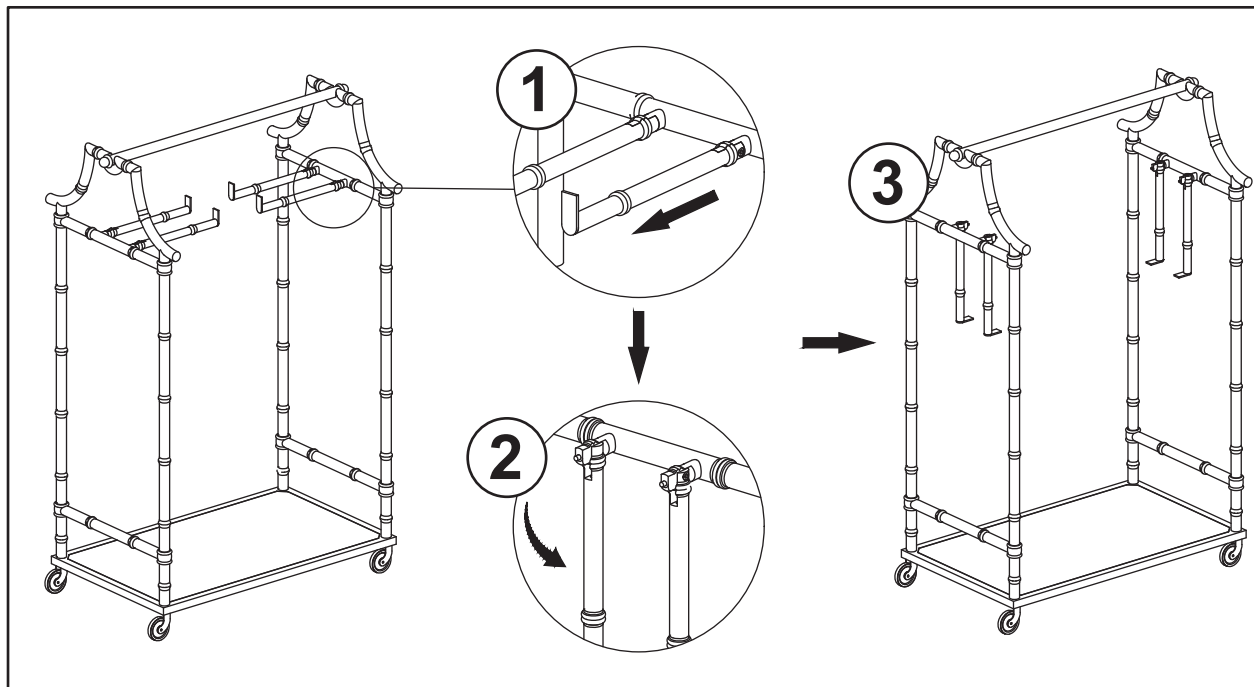
MADE IN CHINA

Page 1 of 2

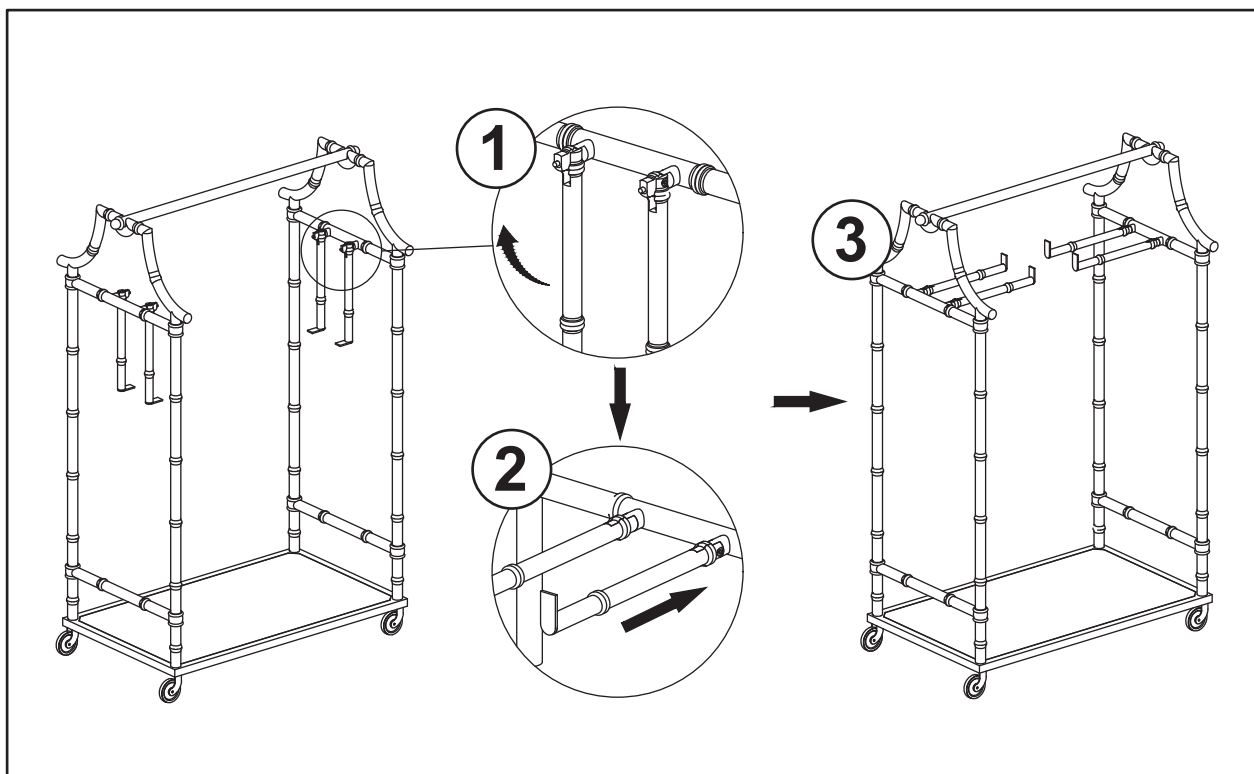


No Assembly Required

DISENGAGING HANGER RODS: Pull straight out toward center of Rack then push down.



ENGAGING HANGER RODS: Pull up then pull out toward center, push back to lock in place.



Cleaning and Care

- Periodically vacuum or wipe away dust or debris from casters.
- Ensure equal movement of all casters and periodically treat with a gel-type lubricant. In dusty environments, use a dry lubricant to prevent dust build up.
- Periodically wipe down rack with a dry cloth. Do not use chemical cleaners.



Customer Service: 800-367-2810
Online: www.ballarddesigns.com